

# A key to the future Company Profile



Follow us



Visit our website

[www.keyfuture.com](http://www.keyfuture.com)



# From distribution through a deep Customization



**KF** is the acronym of **“KEY TO THE FUTURE”** and underlines the main characteristics of our Company since its foundation.

Our Pay Off **“YOUR IDEAS, OUR NEXT CHALLENGE”** is our daily focus and activity, in order to satisfy our customer’s idea/need at 360° thanks also to our partner/supplier solutions.

**Our philosophy** is always to establish a perfect partnership both with suppliers and customers.

We believe that our “key to the future” is to put the **customers at the center** and give them **all the attention and support** they need, building up a win-win relationship, which will assure additional **value and high quality** before and after the sales activities.



KF ATM APPLICATION FOR SPAIN



## Mission

---

### FAN GRAVE CUSTOMERS...

making them so satisfied with our quality, service and performance, that they would be crazy to even consider changing from us. **Making of our customer's ideas our next challenge** as well as the compass in our daily navigation towards the common goal of the end user's final experience, achieving the leading position in the marketplace.

## Vision

---



A World more and more organized around **visual and touch interaction**, where it becomes as commonplace as listening and talking, enabling the **evolution of the consumer experience** through solutions created by our customer.



## Culture

---

We are a Team committed in doing great things, **cooperating to deliver exceptional business results for our Customers**. We are accountable, result-driven and focused on creating value, through continuous improvement and excellent execution.

***You Dream, We Display!***





# Our Timeline

---



## 1996 - 1999

KF was founded by a group of people expert in customer service and sales of OEM products. Progressively important manufacturers like JCM, Citizen, Japan Cash Machine, Asahi Seiko and others, still nowadays appoint KF as its own Italian distributor and in some cases on exclusive basis.



## 2001

KF built the facilities where it is now located (1000 sqm.). This broad and rapid expansion was achieved thanks to a well spread out sales network - At that time KF started the development and production of its own customized products (Printers and Monitors).



## 2003 - 2010

KF invested in one company in Florence for assembling and development, and one in Korea. KF is grew in the field of industrial monitors and invests in R&D. The main focus became tailored visualization solutions.



## 2011-2014

Inside a quite complex and sometime unpredictable economic market, KF decided to focus on its own original business segment where obtained great success. KF then sold company's business Units not really part of the soul of the Company (Power Supply, Small LCD, Fiscal Printer and the remaining activities related to the renewable). KF's focus is now on Visual Solutions.



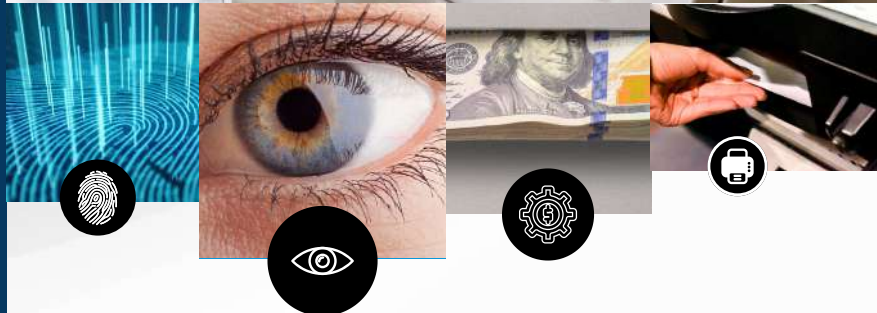
## 2014 - 2021

KF grows in the Italian market with payment solution, peripherals and mostly, **Customized Monitor solutions**. KF is still starting to push and develop the European market attending the most important international exhibitions and becoming a market leader industrial monitor solution.

# 2 Main Business Lines

Since few years, the internal evolution of KF led to a new business organization based on **3 levels of proposal to the market: Production, Integration and Distribution;** together with 4 clear product lines (**monitors and visualization, money management, ID peripherals and industrial printers**). The willingness to follow the theories of lean thinking, focused on a few specific things and to offer to our customers specific and **efficient services**, this is the hallmark of the new KF of the future years..

**Our range of products is defined based on over twenty-five years experience of some of its founders and the close relationships with our project partners, companies of global significance, certified producers and qualified suppliers.**



## 1 VISUALIZATION SOLUTION

Wide range of **customized monitor from 4,3" to 55"**. Driven by future technology touch system. with KF's own board, remotable in order to control everything from distance, with many features as **Luminos Intensity Sensor, Proximity sensor, Temperature and Vibration sensor**, wide range power supply, and wide range temperature.

## 2 MONEY MANAGEMENT SUBSYSTEM

We provide **the best solutions** that help making **automated cash transactions as secure as possible** thanks to the highest Japanese quality products.

## ID PERIPHERALS & PRINTING SOLUTIONS

These are complementary lines in KF, in order to support and give service to our customers.



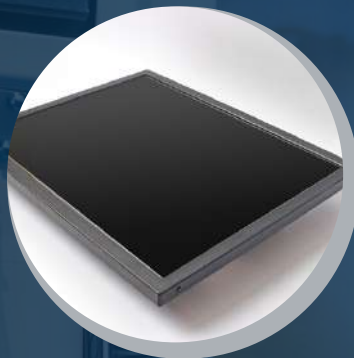


# Visualization Solution

- 👁 Industrial monitor from 4,3" to 55", for different application (Petrol O.P.T., ATM, Visual, Medical, Vending Machine, Ticketing machine). With many customized features: Touch, wide range temperature -30 + 85, vandal proof, privacy filter, AG, AR, AF treatment any IP and IK level. KF'S own Ad Board (VGA-HDMI-DVI-DP)



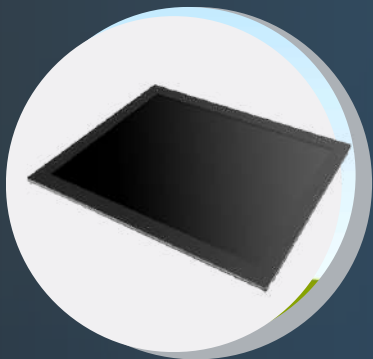
15", heavy duty Italian railway project, 12 mm SAW, VGA/DVI



POE and POE+; with or without touch; Android driven; 10"-21.5" range



12.1", 1000 cd/m2; 4 mm pCap Anti-Finger with customized Logo; VGA/HDMI/DP; Fingerprint sensor



19", 450 cd/m2; 6mm pCap with Anti-Bacterial treatment; VGA/HDMI/DP; wide range



10.1", 280 cd/m2; pCap; back cover in galvanized metal, plastic front bezel; VGA/HDMI



7", 300 cd/m2; pCap; compact design; customer application as well as service application



# Money Management Subsystem

*... and a bit more*



Bill and Coin acceptor/dispenser (and recyclers) Money management machine, bill acceptor for payment terminals, self check out, safe box and many other applications like compact solution, cashbox, currency recycling.



Id Peripherals and Printing Solutions.





# Design on-demand

## *Amazing customization!*

ATM Italian Application, ATM Spanish Application, Ticketing Machine Italo & Trenitalia, Petrol Station OPT (Outdoor Payment Terminal). With many customized features: touch screen, wide range temperature  $-30^{\circ} + 85^{\circ} \text{ C}$ , vandal proof, privacy filter, Anti Glare, Anti Reflection, Anti FingerAnti Bactirial treatments, any IP and IK level. KF'S own Ad Board  $-30/+85^{\circ}$  remotable (VGA-HDMI-DVI-DP)



Outdoor italian  
highway system Tool  
Paymnet 12"



Mayor Spanish ATM  
15", 21"



TVM Italo & Trenitalia  
17", 19", 27", 32" Digital  
Signage



Medical Equipment 19"



Free Standing Coffee  
Machine 15", 21.5",  
23.6"



Pharma &  
tobacco  
vending  
machine 21.5",  
23.6", 27", 32"



Coffee Machine  
(Table top) 7", 10"



OPT Outdoor Payment  
Terminal 21.5", 15",  
12.1"



# Digital signage



## *Interactive communication solution.*

A New era is opening for the Human Race...

**"Visualize...touch...listen...talk"** all in one technology and product. This is a solution which will have many uses in the world of tomorrow: **Magic Interactive Mirrors, Black Boards for schools and more, interactive touch tables or meeting Pads and your ideas!**

Customized Industrial monitors (indoor and outdoor) with and without touch screens, from 4,3" to 55" and more, wide temperature range, with and without PC, with any kind of brightness and technology inside.

**We are the leading manufacturer of monitors for Italian Railways Italo & Trenitalia, Kiosks, rugged TFTs and Ad board kits. We are the top provider of monitors for Toll Booths on the Italian highway network, for Banking Deposit machine as well for two of the major ATM makers in Italy and Spain and so many others.**

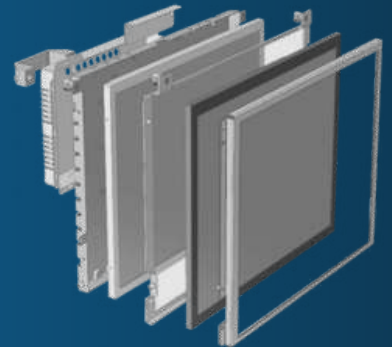
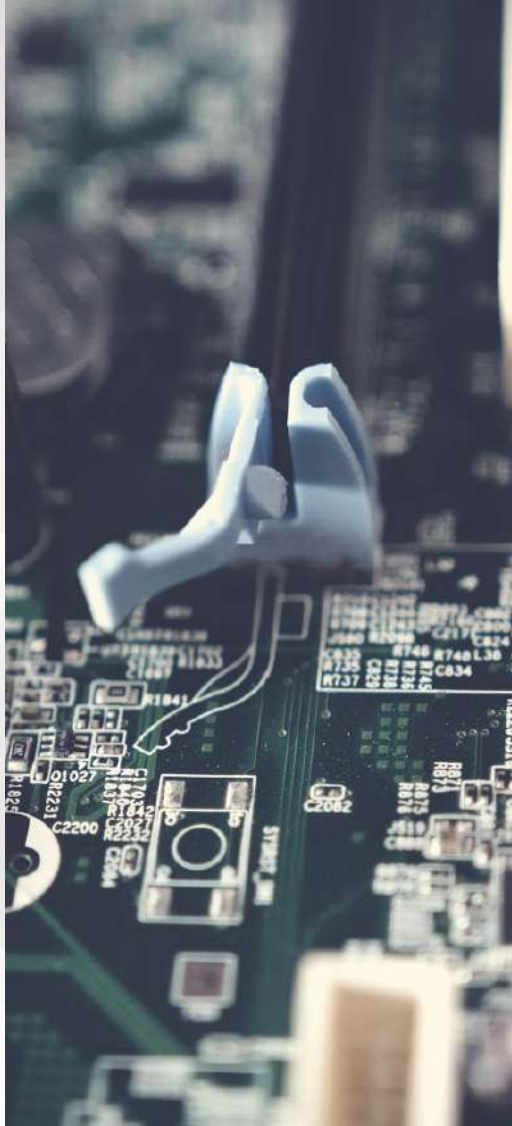


## R & D OFFICE

R&D department is our heart beat. Specialized expert engineers design and project tailored solution based on customer's request.

**Our internal lab develops prototypes, checks and assembles new solutions.**

Inspection and Quality control are our way of work in order to assure the best service to our customers.



Drawing of a customized monitor 15" for an outdoor application







# Our History

In a region known for Sport Cars, Dreams, **Italian Passion** and «La Dolce Vita», in a city famous for Italian food specialties such as amazing Balsamic Vinegar, home to outstanding Singers and Fashion Designers and more .... In 1996 we established KF, with the trust that **«the future belongs to those who believe in the beauty of their dreams»** and with the idea that everything around is connected ; and not only in business. Our thoughts and our passion create our products and our relationships ; our products and our relationships create our success and the dream for our next challenge.

## ... and our contribution

KF has been hosting for years, at its headquarters, the **offices of the Association "Amazonia Sviluppo Odv"**, a non-profit organization of the Third Sector, which deals with **humanitarian projects for the Amazon**.

KF is also creating and coordinating an experimental social project. The idea of this initiative is to develop a kit consisting of amorphous, light, rollable and transportable **solar panels, which produce energy for storage** in a battery compartment. The stored energy will be made available at exactly the time needed, for the operation of the **extraction pumps for wells**, near villages without services in Kenya.





# THE FUTURE OF THE GROUP

**"The future belongs to those who believe in the beauty of their dreams" (Eleanor Roosevelt).**

The strong wish to keep alive the flame of enthusiasm and passion that has always characterized our company since its foundation (over 25 years ago), pushed us to redesign and revitalize our company over the last few years as well as Our "key to the future".

The desire to prioritize research, innovation and focus on a few narrow, but well done, specialties, was one of the reasons why, in 2012-2013, KF redesigned its new "Future" and returned to its initial core business.

KF believes that "real" cooperation and growth is always achieved together with partners (customers and suppliers) Taking partners with us on the most difficult and exciting challenges, we will never stop dreaming!

## YOUR IDEAS, OUR NEXT CHALLENGE



**KF Srl Società Benefit**  
Strada S. Anna, 88/D - 41122 - Modena - Italy  
Ph +39.059.313920 - Fax +39.059.313916  
info@keyfuture.com - www.keyfuture.com  
P.IVA/VAT IT02385320367

